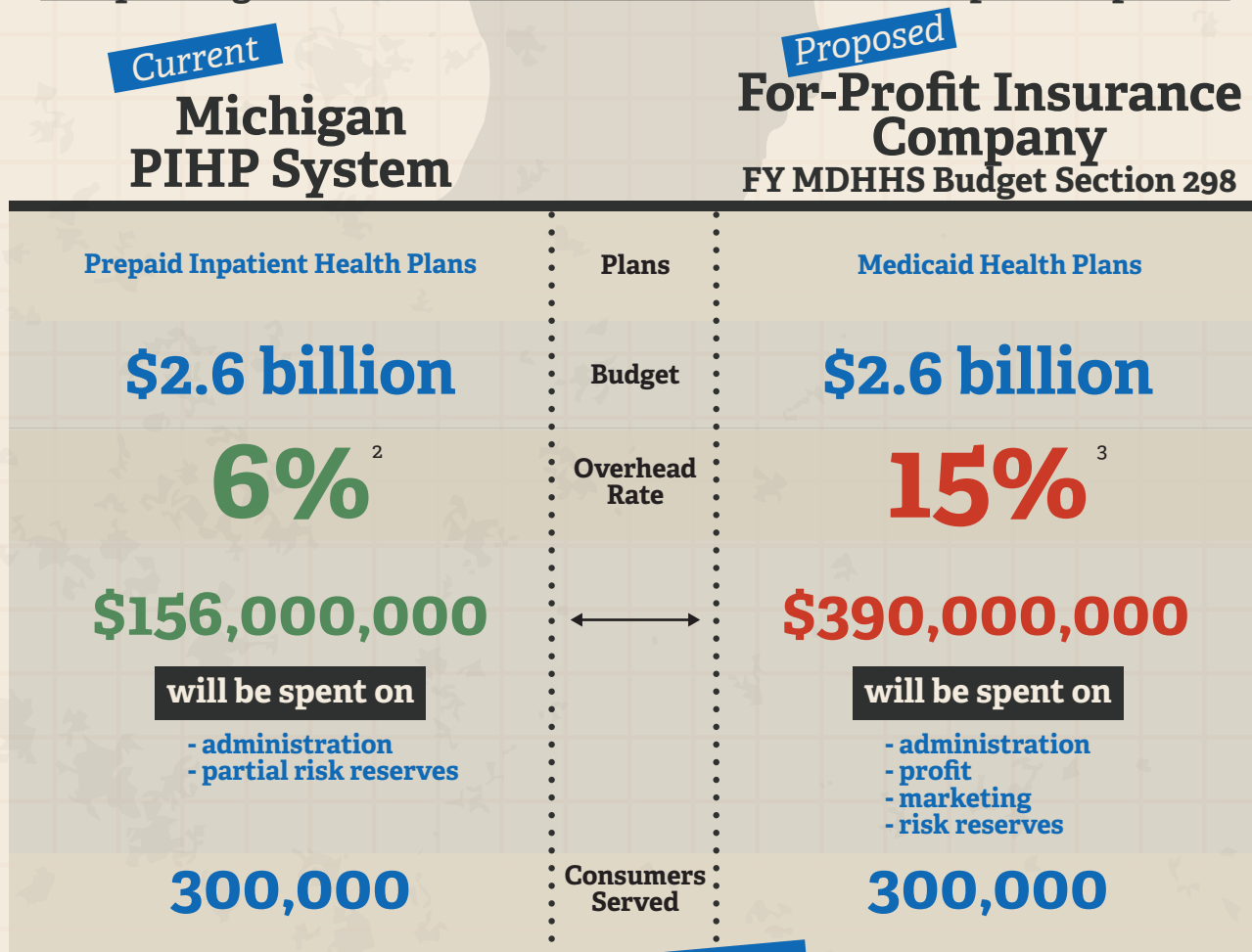


PROTECTING MICHIGAN'S MOST VULNERABLE CITIZENS

Michigan's behavioral health system is considered a leader in innovation and integrating high quality care for over 300,000 citizens. Michigan is the only state that is completely managed care and has integrated mental illness, intellectual/developmental disabilities, and substance use disorder services into one system. According to a 2015 Public Sector Consultants report Michigan is pioneering advances in care that is **innovative, cost-effective and evidence-based**.¹

Over the past year MDHHS has taken a closer look at the best way to integrate behavioral and physical healthcare services. The department lead a workgroup that included input from ALL stakeholders and received feedback from thousands of Michigan citizens to develop 70 policy recommendations and evaluated a number of potential pilots that support those recommendations. Despite the workgroups report and feedback from thousands of consumers and families who expressed concern with for profit insurance companies managing their care, some are pushing for extreme pilot projects in the FY18 budget. **In fact, after Michigan expanded Medicaid coverage the state's Medicaid health plans saw their profit margins soar showing an income of \$298 million in 2015 and a 3.9 percent margin, compared with income of \$163.1 million in 2014 prior to the implementation of Medicaid expansion according to July 27, 2016 Crain's Detroit Business report.**

Many Michigan families fear their care will come at the expense of profits.



The Take-Away

This proposed change results in over \$200,000,000 less for services and supports for Michigan's most vulnerable citizens

We support the 298 workgroup final report that recommends public management of Michigan's behavioral health services.

SOURCES:

¹ "Community Mental Health in Michigan: Evidence and Innovation," Public Sector Consultants, Lansing, January 2015.

² PIHP Medicaid utilization and net cost report

³ 2016 Michigan Comprehensive Health Plan contract